

S510 ACCESSORY SPEC BROCHURE



GETAC TECHNOLOGY CORPORATION

5F, Building A, No. 209, Section 1, Nangang Rd., Nangang Dist., Taipei City,
115018, Taiwan, R.O.C. Tel : +886 2 2785 7888 globalmarketing@getac.com |
www.getac.com

CARRY BAG

Features & Benefits

Constructed of durable Nylon/air mesh fabric and featuring an adjustable padded shoulder strap, this compact carry bag provides sturdy protection for your device while giving maximum comfort. The functional pockets inside offer the optimal solution to transport the laptop and needed accessories together in one case, delivering extra convenience and go-anywhere productivity to mobile professionals.

Product Information

Dimensions : L 405 x W 330 x D 100mm
Weight : 1.335kg
Main Material : Nylon, air mesh fabric

SKU ID

GMBCX7



120W DC-DC VEHICLE ADAPTER

Features & Benefits

The 120W vehicle adapter comes with a choice of two types of connections: a bare wire with individual wire ends already stripped, and a cigarette lighter plug for easy connection to the cigarette lighter socket in the vehicle interior, providing a convenient way to charge and power your tablet while you are on the road.

Product Information

Input Voltage : 11VDC~ 32VDC

Output Voltage : 19VDC

Output current : 6.32A Max.

Case Dimensions : L 131.5 x W 65.6 x H 30mm

Weight : 362g

Input cable length : 1900mm

Output cable length : 1000mm

SKU ID

GAD2X4 (Cigarette Lighter Plug Version)

GAD2X8 (Bare Wire Version)



65W AC ADAPTER WITH POWER CORD

Features & Benefits

This adapter is designed to power the device and charge its internal battery from an AC power source. A country-specific power cord is included with the adapter to fit the local power outlet in your designated country.

Product Information

Input : 100V-240V, 50~60Hz, 1.5A
Output : 19V, 3.42A, 65W
Dimensions : L 108.3 x W 46.3 x H 30mm
Weight : 250g
Input cable length : 1830mm
Output cable length. : 1500mm

SKU ID

GAA6E5 (EU Power Cord)
GAA6U5 (US Power Cord)
GAA6K5 (UK Power Cord)
GAA6A5 (AU Power Cord)
GAA6C5 (CHN Power Cord)
GAA6T5 (TW Power Cord)
GAA6G5 (ARG Power Cord)
GAA6I5 (IN Power Cord)
GAA6J5 (JP Power Cord)
GAA6R5 (KR Power Cord)



90W AC ADAPTER

Features & Benefits

This adapter is designed to power the device and charge its internal battery from an AC power source. A country-specific power cord is included with the adapter to fit the local power outlet in your destination country.

Product Information

Input : 100V-240V

Output : 19V, 4.74 A, 90W

Dimensions : L 140.1 x W 65.1 x H 25.4 mm

Weight : 275 g

Input cable length : 1830mm

Output cable length: 1500mm

SKU ID

GAA9U6 (US Power Cord)

GAA9E6 (EU Power Cord)

GAA9K6 (UK Power Cord)

GAA9C6 (CHN Power Cord)

GAA9A6 (AU Power Cord)

GAA9T6 (TW Power Cord)

GAA9I6 (IN Power Cord)

GAA9G6 (ARG Power Cord)

GAA9J6 (JPN Power Cord)

GAA9R6 (KR Power Cord)



GETAC DS100 USB-C DOCKING STATION

Features & Benefits

The Getac DS100 USB-C Docking Station, featuring a slim and compact design, seamlessly consolidates cables on the workstation. This allows users to swiftly create a personalized workspace and organize their daily office environment. Compatible with various Getac laptop and tablet models, it provides extra connectivity and multiple I/O ports for additional peripherals and data sources. With support for MAC Address Pass-Through, Wake-on-LAN (WoL), and PXE Boot, the DS100 aids IT administrators in maintaining a secure, efficient, and well-managed network infrastructure. (The docking station's performance, including transfer speeds and display capabilities, may be limited by chipset and operating system when used with Getac Android systems. See the user manual for details.)

Product Information

Dimensions: L 207 x W 90 x H 31mm (8.15" x 3.54" x 1.22")

Weight: 335g (0.74lbs)

Power Cable Length: 1.8m (5.9ft)

USB-C Upstream Cable Length: 1m (3.28ft)

I/O Ports: DC in Jack x 1, Audio in/out combo x 1, USB 2.0 x 2, USB 3.2

Gen 1 Type-A x 3, USB 3.2 Gen 2 Type-C x 2, LAN x 1, HDMI 2.0 x 1,

Display port x 2

SKU ID

GDDSE1 (EU Power Cord)

GDDSU1 (US Power Cord)

GDDSK1 (UK Power Cord)

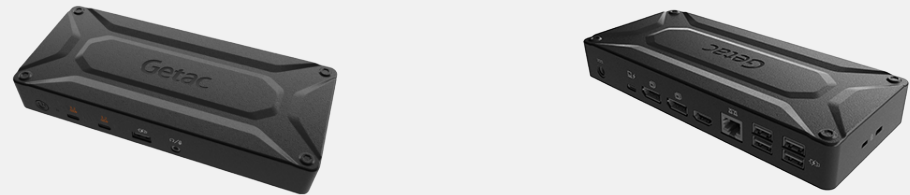
GDDSA1 (AU Power Cord)

GDDSC1 (CHN Power Cord)

GDDST1 (TW Power Cord)

GDDSI1 (IN Power Cord)

(Long production lead time. Estimated ready-to-order date: 2024/12/31)



MULTIMEDIA BAY 2ND STORAGE WITH CANISTER

Features & Benefits

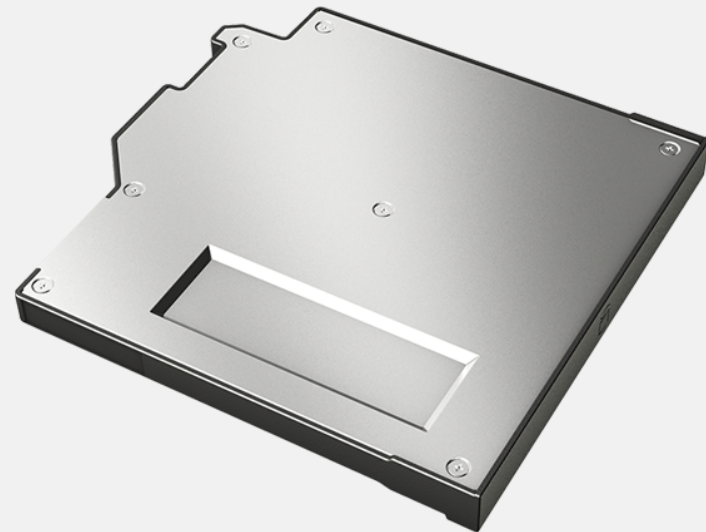
Getac S510 second storage with canister is designed to provide you the ease of installation and allow you to remove your confidential data when your device is sent for service.

Product Information

Capacity : SATA 512GB/1TB
Dimension : 120 x 135.5 x 14mm
Weight : 80g

SKU ID

GSR3X7 (512GB SATA SSD)
GSR0X6 (1TB SATA SSD)



SCREEN PROTECTION FILM (AG)

Features & Benefits

This screen protection film is cut precisely to fit the S510 laptop and is easy to install and remove without leaving a sticky residue. With anti-glare coating, it not only protects the screen from the rigors of daily use but also helps to diffuse light on the screen and reduces glare, providing effortless readability for displayed information under common ambient lighting conditions.

Product Information

Dimensions : L 344.2 x W 193.6 x D 0.13mm
Main Material: PET

SKU ID

GMPFXW
* MOQ : 10pcs



STANDARD BATTERY 6900MAH

Features & Benefits

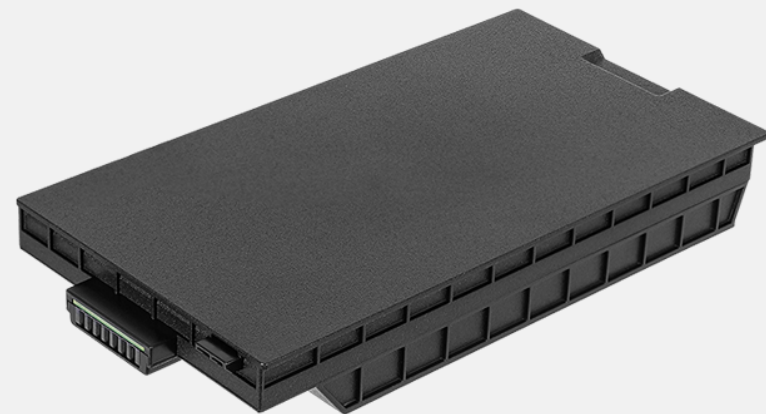
The hot-swappable battery can support full-shift computing with no downtime. It is a great solution for mobile professionals who require long battery life for all-day operation.

Product Information

Battery Type : Lithium-ion Polymer
Voltage : 10.8V
Capacity : Typical 6900mAh ; Min. 6600mAh
Dimensions : L 143 x W 74 x H 20.5mm
Weight : 328.8g

SKU ID

GBM6X9



DVD SUPER MULTI DRIVE

Features & Benefits

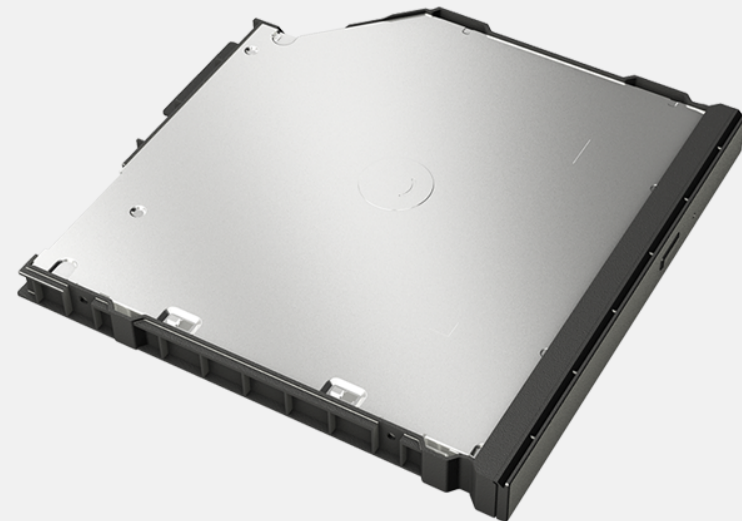
The DVD Super Multi Drive is an optical disk drive that can read and write for different kinds of optical disks. It allows the user to access a variety of different media formats. Besides, it is a user-removable module that can be installed without tools.

Product Information

Dimension : L 138.5 x W 135.5 x H 14mm
Weight : 170.5g

SKU ID

GSROXC



MULTI-BAY BATTERY CHARGER EIGHT BAY

Features & Benefits

The 8-bay multi-battery charger is designed to charge multiple battery packs simultaneously and provide users an efficient charging solution.

Product Information

AC Input : 100V~240V AC, 4.2A 50~60Hz
DC Output : 19.5V, 16.9A * w/ 330W AC Adapter
Number of charge bays : 8 bays
Dimensions : L 465 x W 245 x H 95.3~111.3mm
Weight : 4.7kg

SKU ID

GCECEQ (EU Power Cord)
GCECUQ (US Power Cord)
GCECKQ (UK Power Cord)
GCECAQ (AU Power Cord)
GCECCQ (CHN Power Cord)
GCECTQ (TW Power Cord)



SPARE MAIN STORAGE

Features & Benefits

Getac S510 Spare Main Storage with canister is designed to provide you the ease of installation and allow you to remove your confidential data when your device is sent for service.

Product Information

Capacity : PCIe NVMe 256GB/512GB/1TB/2TB
Dimension : 100 x 29 x 10.2mm
Weight : 24.5g

SKU ID

GSSEXB (256GB PCIe NVMe SSD)
GSSFXC (512GB PCIe NVMe SSD)
GSSGXD (1TB PCIe NVMe SSD)
GSSHXB (2TB PCIe NVMe SSD)



CAPACITIVE STYLUS & TETHER

Features & Benefits

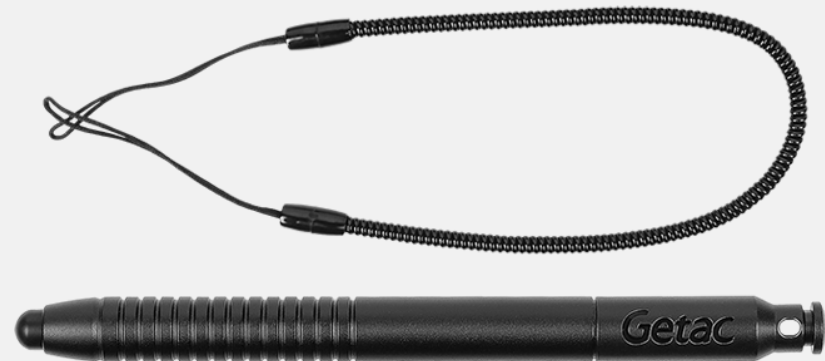
This capacitive hard tip stylus is lightweight and easy to control, allowing smooth and comfortable interaction with the touch screen without worrying about scratching the screen or leaving fingerprints on it. The stylus comes with a detachable tether to keep the stylus attached to the device, so it doesn't get lost or misplaced.

Product Information

Stylus Dimensions : 110mm ; Ø9mm
Tip size : 4mm ; Ø5.5mm
Tether Length : 304mm

SKU ID

GMPSXW
* MOQ : 10pcs



EXTERNAL DUAL BAY MAIN BATTERY CHARGER

Features & Benefits

This external dual-bay main battery charger is designed to charge up to two batteries at the same time. It provides you the benefit of charging and storing the 2 main batteries together when there are limited space and power socket.

Product Information

AC Input : 100V~240V
DC Output : 13.05V, 2.4A Max.
Number of charge bay : 2 Bay
Dimensions : L 160 x W 180 x H 72.5mm
Weight : 1.2kg

SKU ID

GCMCEP (EU Power Cord)
GCMCUP (US Power Cord)
GCMCKP (UK Power Cord)
GCMCAP (AU Power Cord)
GCMCCP (CHN Power Cord)
GCMCTP (TW Power Cord)

